



Ny-Ålesund
Research Station
Norway

Ny-Ålesund Research Station

A brief introduction

Norwegian Polar Institute and Kings Bay AS
22nd January 2026

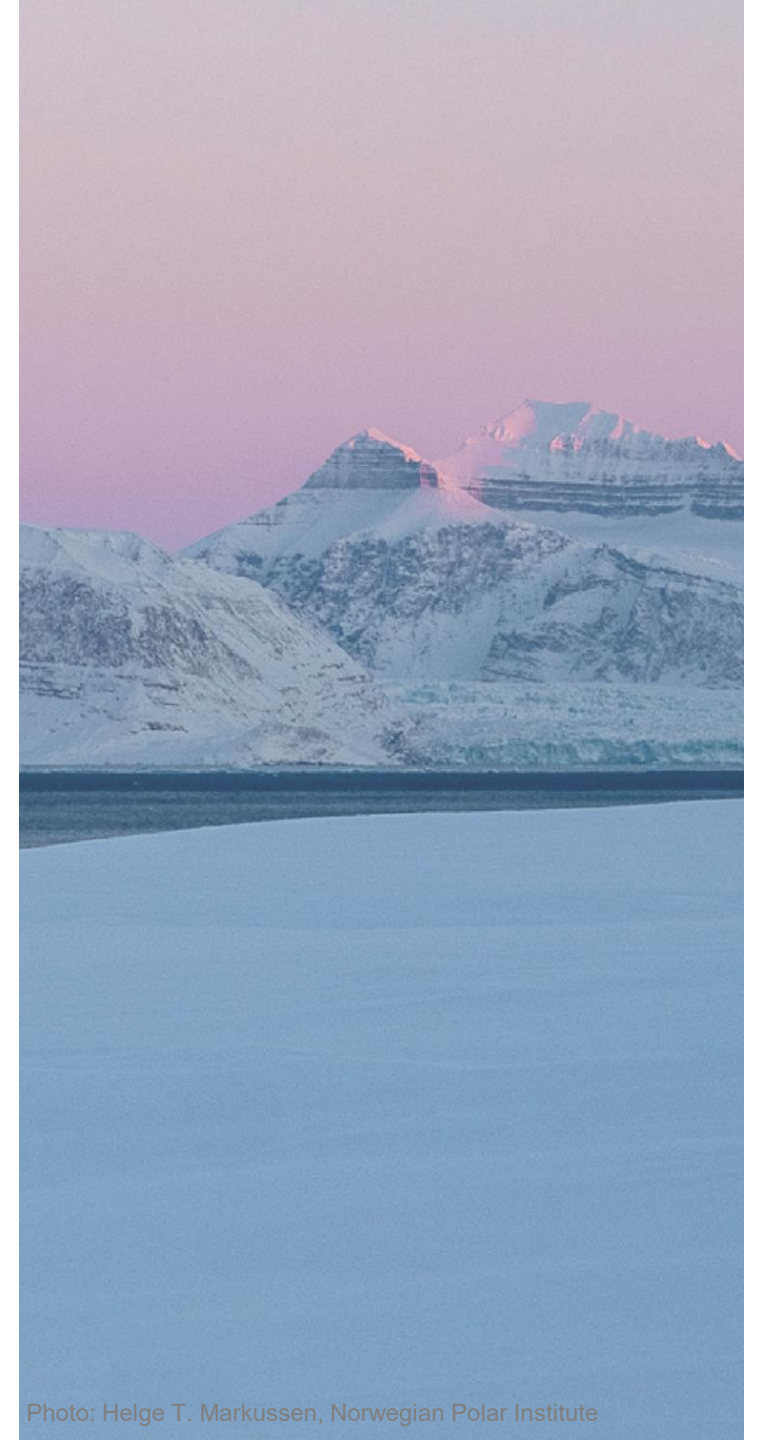


Photo: Helge T. Markussen, Norwegian Polar Institute

Introduction programme

Information about the research station,
and what you as a researcher working
in/from Ny-Ålesund need to know

Target group: Researchers working in Ny-Ålesund, primarily those of you who are new in Ny-Ålesund, but also for those who might want a refresher

Digital meeting twice a year

Duration: 60 min + questions



Ny-Ålesund
Research Station
Norway



Photo: Trine Lise Sviggum Helgerud/NPI

Webpage: <https://nyalesundresearch.no>



Who we are



Norwegian Polar Institute

- Instructed by the Norwegian government to:
 - Lead the research station
 - Implement the research strategy
 - Act as local host
 - Coordinate research



Kings Bay AS

- Land owner and planning responsible for Ny-Ålesund
- Responsible for community operation, maintenance, and development of the research station
- Provides research infrastructure and logistics support
- Tasked with preserving the cultural heritage

Agenda

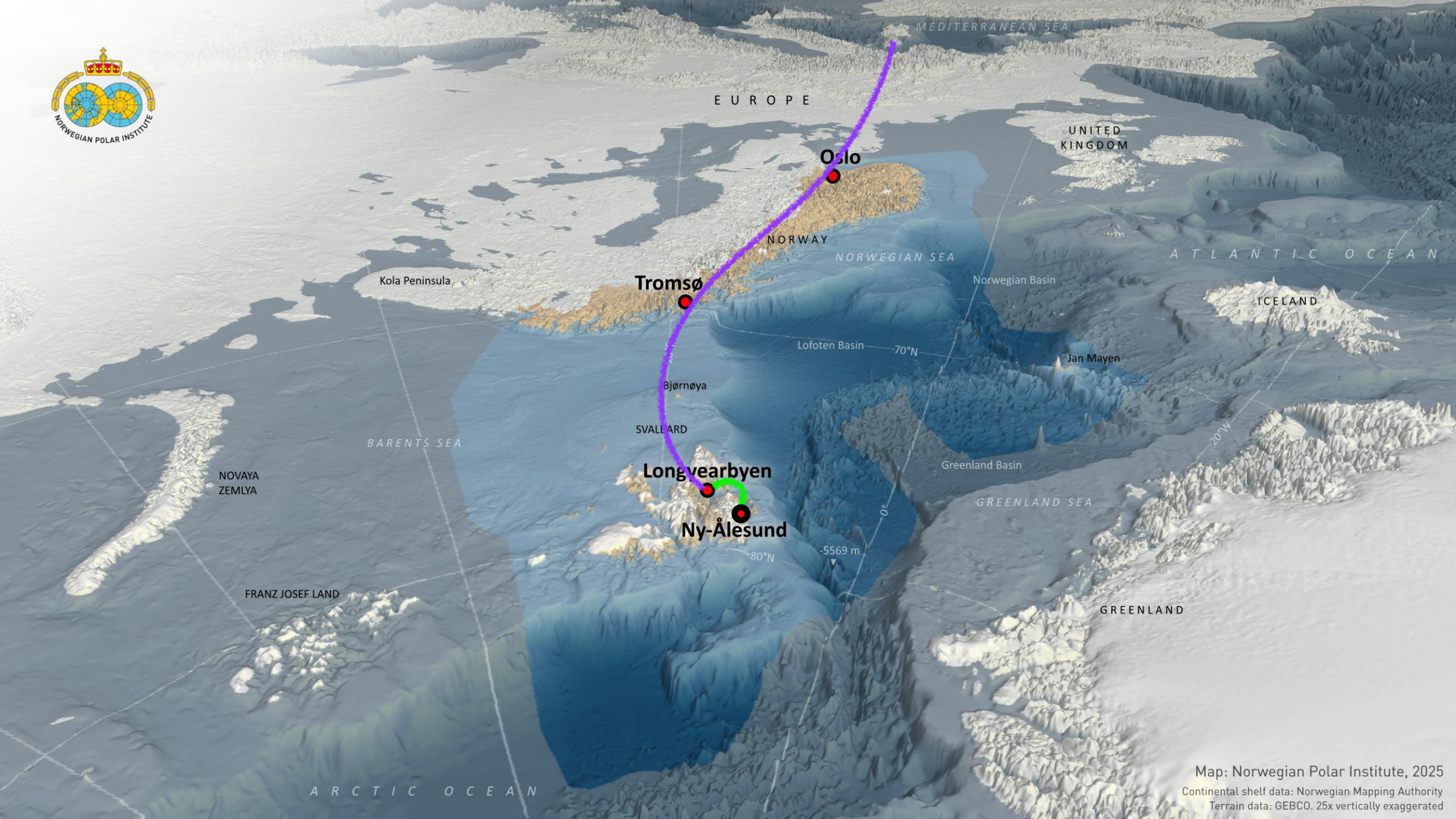
1. Ny-Ålesund Research Station
 2. The Ny-Ålesund Flagship Programmes
 3. Essential Systems and Tools
 4. Research Infrastructure and Facilities in Ny-Ålesund
 5. Preparations, Permits, etc. (What you need to do before arrival)
 6. What to Expect when in Ny-Ålesund
 7. Safety
- Questions & Answers





Part I

Ny-Ålesund Research Station

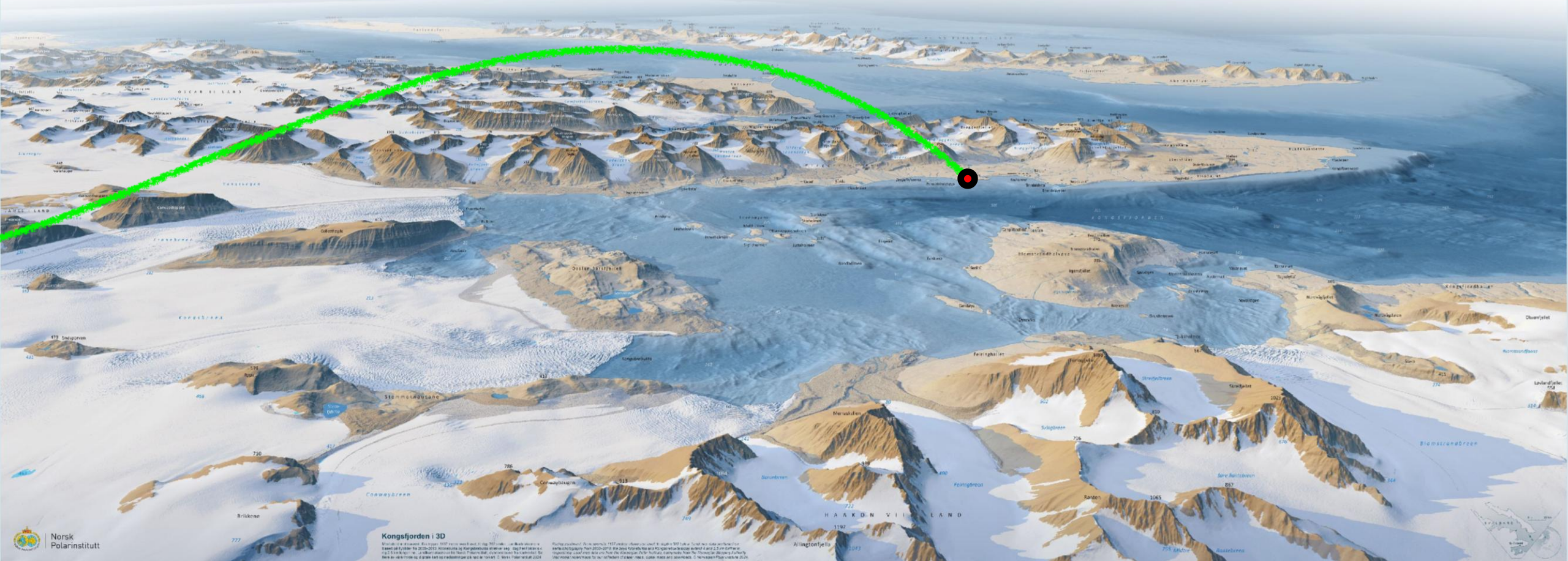


Map: Norwegian Polar Institute, 2025

Continental shelf data: Norwegian Mapping Authority

Terrain data: GEBCO. 25x vertically exaggerated

Ny-Ålesund Research Station

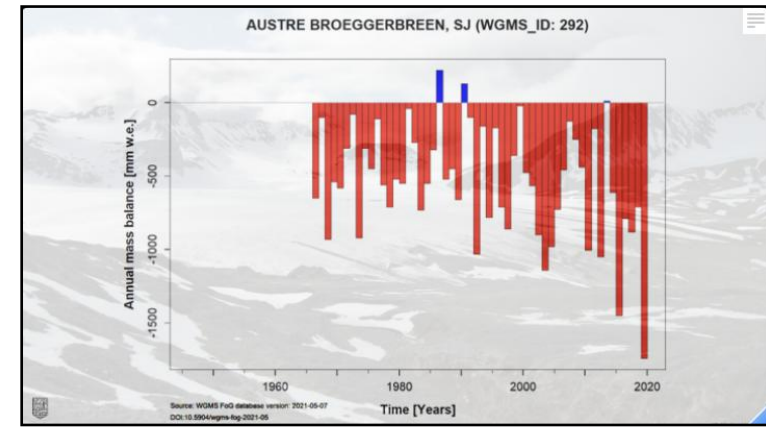
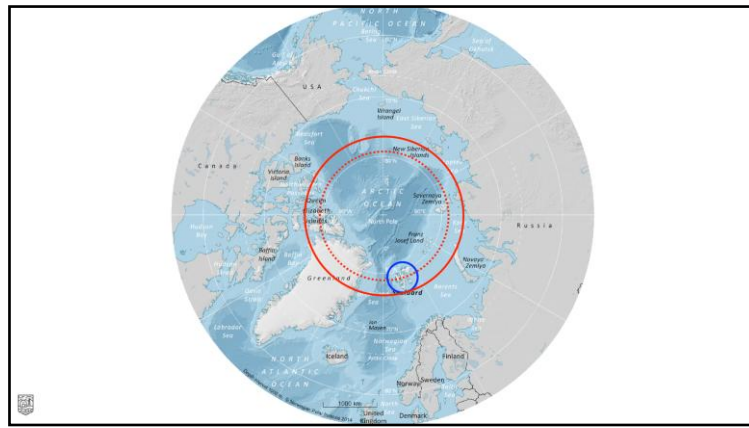


[illegible]



Photo: Geir Gotaas, Norwegian Polar Institute



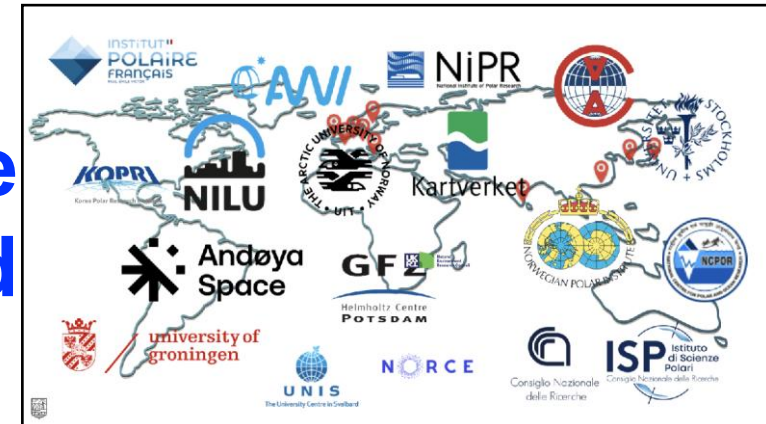


Input
con

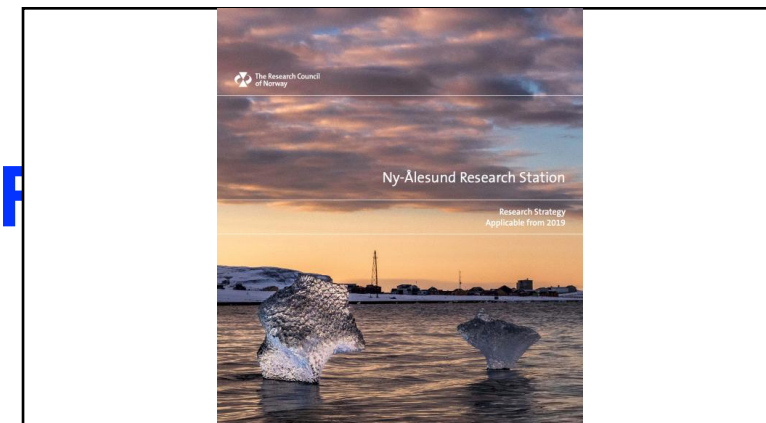


orks

Inte
and



tion



F

t





Norwegian Ministry
of Justice and Public Security

Meld. St. 32 (2015–2016) Report to the Storting (white paper)

Svalbard



Norwegian Ministries

Strategy

Strategy for research and higher education in Svalbard

Svalbard – top of the world for knowledge of global significance



The Research Council
of Norway

Ny-Ålesund Research Station

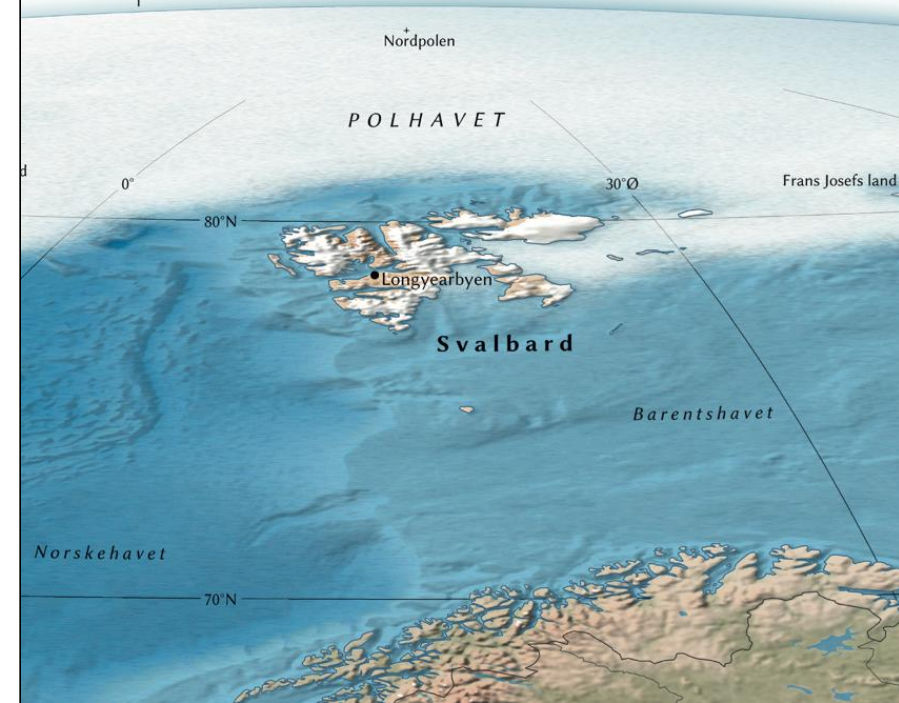
Research Strategy
Applicable from 2019

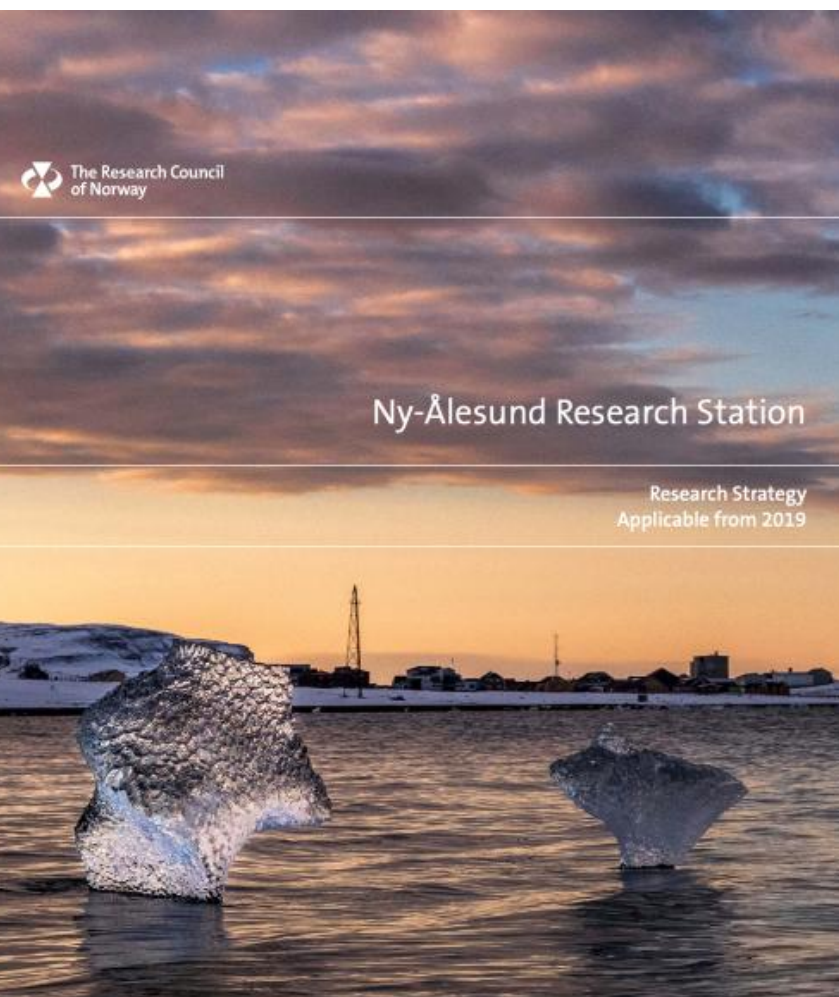


Norwegian Ministry
of Justice and Public Security

Meld. St. 26 (2023–2024) Report to the Storting (white paper)

Svalbard



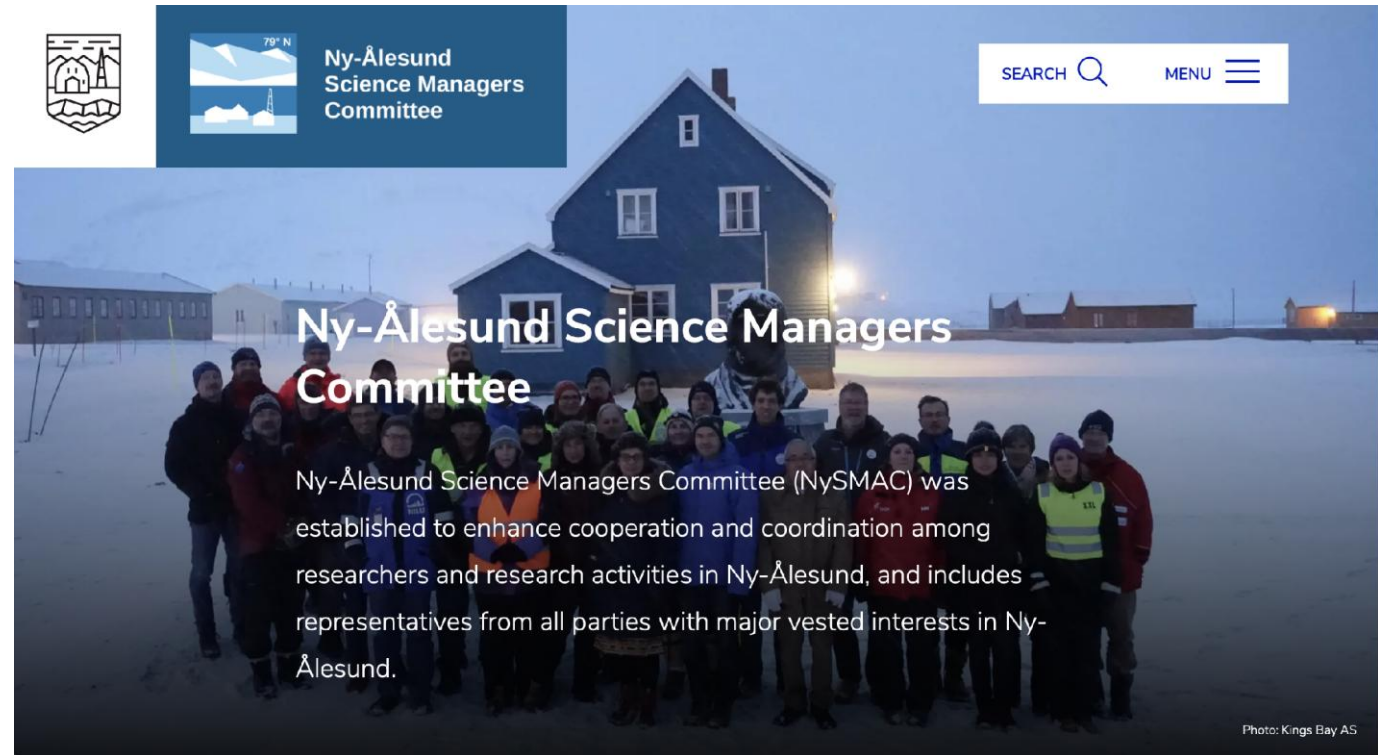


- World class **Arctic natural science**
- Make use of **Ny-Ålesund's unique qualities** as a pristine natural science laboratory
- Research activity should have the **lowest possible environmental impact**
- Further develop the research infrastructure so that it is even more **thematically based** than today, and promotes even more extensive cooperation
- Norwegian Polar Institute in close collaboration and dialogue with **NySMAC**, SIOS, SSF and Kings Bay AS



Ny-Ålesund Science Managers' Committee - NySMAC

- Established in 1994
- Cooperation between institutions engaged in research and monitoring
- 18 members, 4 observers
- Secretariat hosted by the Norwegian Polar Institute



An aerial photograph of a vast, cold landscape. In the foreground, a snow-covered mountain slope descends towards a body of water. The middle ground shows a wide expanse of water, possibly a fjord or bay, surrounded by rugged, snow-dusted mountains. The sky is a deep blue with wispy clouds. The text "Part II" and "The Ny-Ålesund Flagship Programmes" is overlaid in white, bold font in the center of the image.

Part II

The Ny-Ålesund Flagship Programmes

Ny-Ålesund flagship programmes

- Network open for all
- Annual meeting places to share information
- Collaboration and coordination
- Give advice on infrastructure development

More information on flagships:
<https://nyalesundresearch.no/research-and-monitoring/>

Sign up to the newsletter
<https://nyalesundresearch.no/newsletter/>

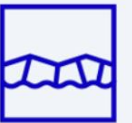
Atmosphere



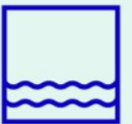
Terrestrial Ecosystems

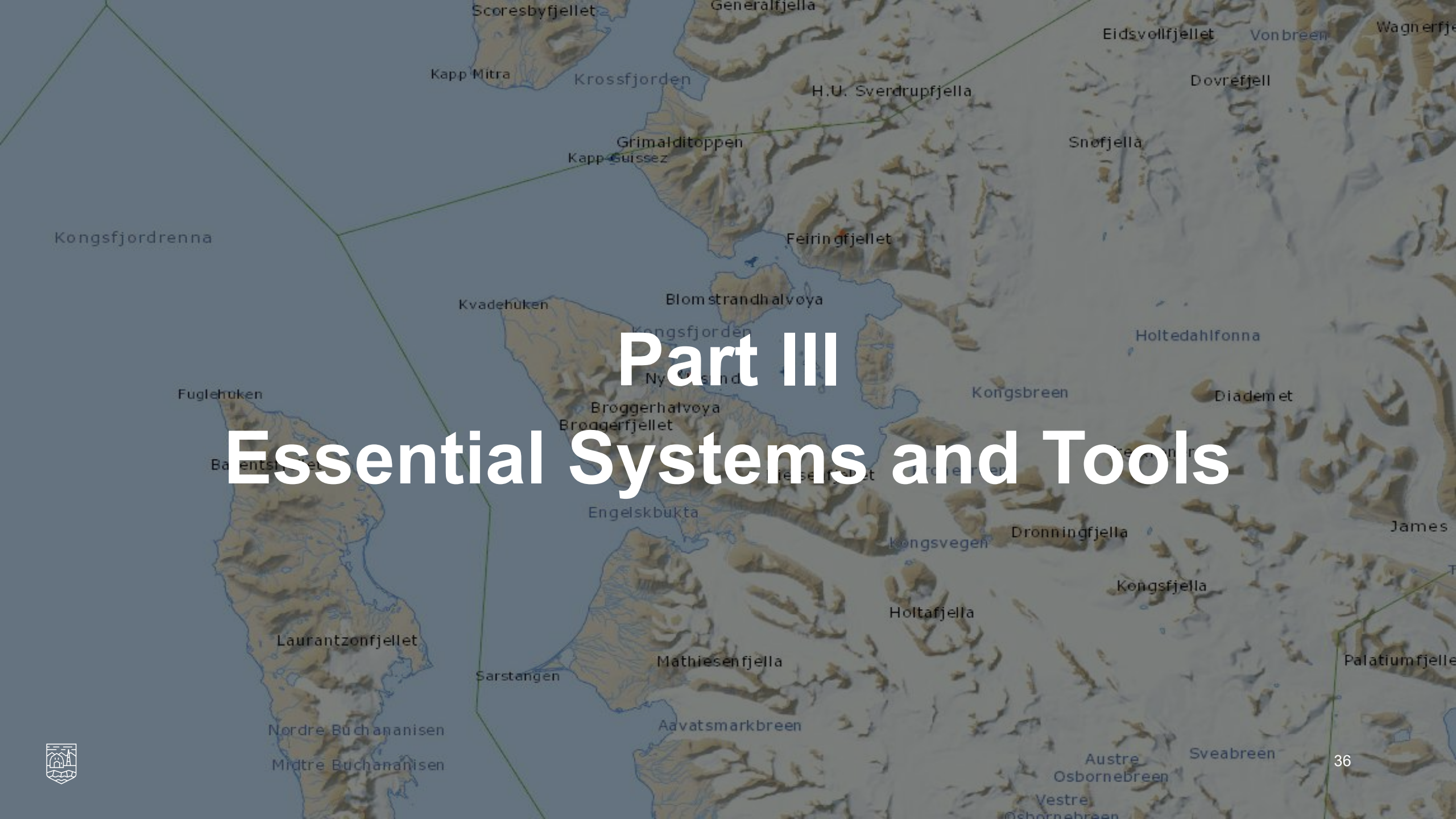


Glaciology



Kongsfjorden System



A topographic map of a mountainous region, likely in Antarctica, showing various peaks, fjords, and ice formations. The map is overlaid with a semi-transparent dark blue layer. The text "Part III" and "Essential Systems and Tools" is centered over the map in a large, white, sans-serif font. The map labels include: Scoresbyfjellet, Kapp Mitra, Krossfjorden, Generalfjella, H.U. Sverdrupfjella, Eidsvollfjellet, Vonbreen, Wagnerfjella, Dovrefjell, Snøfjella, Feiringfjellet, Kongsfjordrenna, Kvadehuken, Blomstrandhalvøya, Kongsfjorden, Ny-Land, Broggerhalvøya, Broggerfjellet, Engelskbukta, Kongsvegen, Dronningfjella, Kongsfjella, Holtafjella, Mathiesenfjella, Aavatsmarkbreen, Sarstangen, Laurantzonfjellet, Nordre Buchananisen, Midtre Buchananisen, Austre Osbornebreen, Vestre Osbornebreen, Sveabreen, Diadem et, James, Palatiumfjella, and Fuglehuken.

Part III

Essential Systems and Tools



The Research in Svalbard Portal

Online portal where you:

- Register your projects
- Apply for permissions from the Governor on Svalbard
- Book your stay in Ny-Ålesund
- Serves as a tool for information about other projects

<https://researchinsvalbard.no>

The screenshot shows the 'Research in Svalbard Portal' interface. At the top, there's a dark blue header with the portal name, a user profile 'Ingrid Kjerstad', and a search bar. Below the header, the project 'Seabird Populations Monitoring (SEAPOP)' is displayed with its RIS ID '361' and an 'Active' status. A 'SELECT ACTION' dropdown menu is visible, with three options circled in red: 'PROJECT INFO', 'APPLICATIONS & REPORTS', and 'BOOKING REQUESTS'. The main content area is divided into three columns. The left column contains 'Funding & Affiliations' (listing 'Arctic Field Grant (AFG)' and 'Field work'), 'Discipline' (listing 'Marine biology' and 'Terrestrial biology'), and 'Project Keywords' (listing 'Biosphere', 'Ecological dynamics', and 'Community dynamics'). The middle column shows 'Project Period' (01 Jan 2005 - 31 Aug 2030), 'Objectives' (describing the SEAPOP programme), a '[Show More]' link, and 'Plan for data collection, sharing and management'. The right column lists 'Associated Projects', 'Collaborating Projects' (with links to RIS ID 1158, 10296, and 10341), and 'Projects Nearby' (with links to RIS ID 1855 and 10296). The bottom of the page features a small logo on the left and the page number '37' on the right.



Maps – 1

Interactive themed atlas – Svalbardkartet

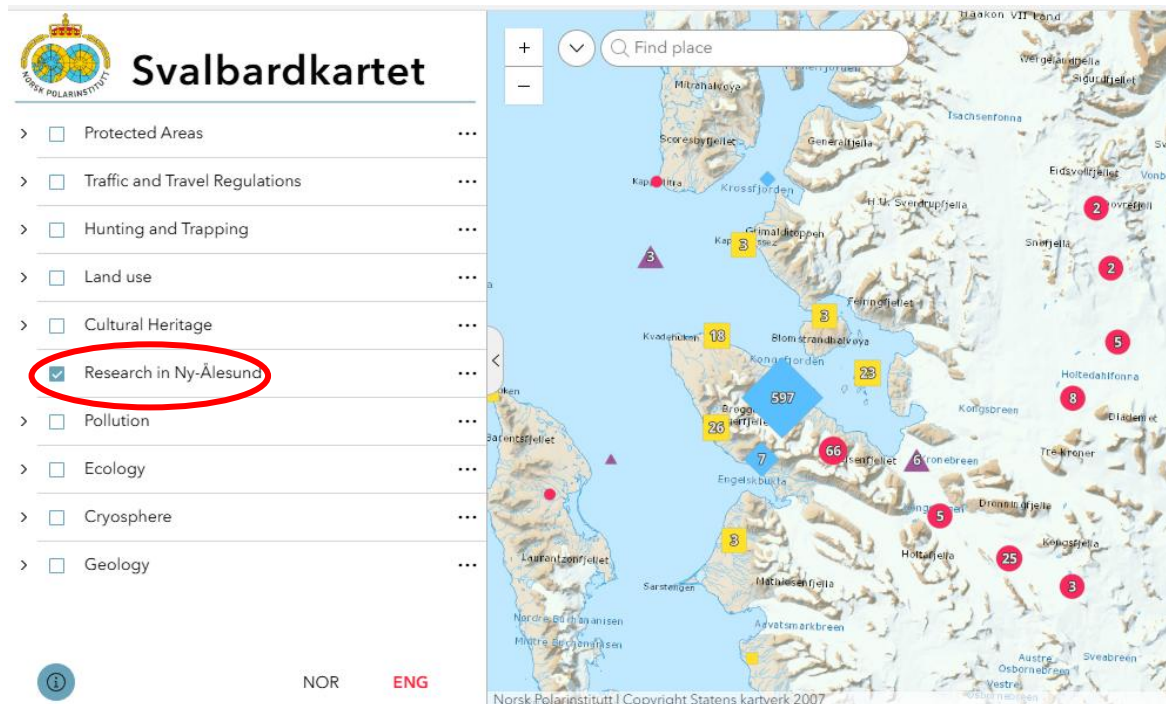
<https://svalbardkartet.npolar.no>

- Rich dataset of environmental data
- Dedicated layer showing Ny-Ålesund Research Objects (GiS-system)

New visualisation via

<https://nyalesundresearch.no/monitoring-at-ny-alesund-research-station-new/>

- Sort per topic, terms and variables



Browse Topic

ATMOSPHERE	BIOSPHERE	CRYOSPHERE
BIOLOGICAL CLASSIFICATION	CLIMATE INDICATORS	LAND SURFACE

Browse Observed Variable

(Blank)	AEROSOL BACKSCATTER	AMBIENT NOISE
ABLATION ZONES/ACCUMULATION ZONES	AEROSOL EXTINCTION	ANGIOSPERMS (FLOWERING PLANTS)
ABSORPTION	AEROSOL OPTICAL DEPTH/THICKNESS	AQUATIC ECOSYSTEMS
ACTIVE LAYER	AEROSOL PARTICLE PROPERTIES	ARTHROPODS
AEROSOL ABSORPTION	ALBEDO	ATMOSPHERIC EMITTED RADIATION

Browse Term

AEROSOLS	ANIMALS/INVERTEBRATES	ATMOSPHERIC CHEMISTRY
AIR QUALITY	ANIMALS/VERTEBRATES	ATMOSPHERIC ELECTRICITY

Observed Variable	Object Name	Owner	Start Year	Data Availability	Monitoring	Part of Network	RIS ID	Object ID
Wet and Dry Only Precipitation Sampler (WADOS)		Institute for Geosciences and Environmental	2016	N/A	Yes		10515	2496
Ionospheric Scintillation Monitoring Receiver (GNSS) - nya0p		National Institute of Geophysics and Volcanology (INGV)	2003	https://metadata.iadc.cnr.it/geonetwork/srv/api/records/b606f2a8-7773-4e6a-b081-353c27b10cec	Yes	GNSS Ionospheric Scintillation monitoring network "eSWua"	3297	2612
Ionospheric Scintillation Monitoring Receiver (GNSS) - nya1p		National Institute of Geophysics and Volcanology (INGV)	2009	https://metadata.iadc.cnr.it/geonetwork/srv/api/records/5f086d47-e7cc-4d52-880a-11ahr84d7b7h	Yes	GNSS Ionospheric Scintillation monitoring network "eSWua"	3297	2588

1301
Monitored Parameters

47
Institutions with monitoring

17
Countries with monitoring

1950
Monitoring since

65 %
Monitoring with available data

61 %
Monitoring supporting networks



Maps – 2

- Topographical map of Svalbard –
Topo Svalbard
<https://toposvalbard.npolar.no>
- Offline map of Svalbard that works
on mobile, tablet and PC



Web cameras

- Web cameras (view of Ny-Ålesund from the Zeppelin observatory and from the airport)
- See <https://nyalesundresearch.no/infrastructures/tools/>

Open data: <https://nyalesundresearch.no/research-and-monitoring/making-research-data-openly-accessible/>



An aerial photograph of the Ny-Ålesund research station in Svalbard, Norway. The image shows a cluster of buildings, including a large white cylindrical structure, situated on a coastal plain. A body of water is visible to the right, and a small inlet or fjord is to the left. The terrain is mostly flat with some low-lying vegetation.

Part IV

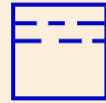
Research Infrastructure and Facilities in Ny-Ålesund

Common thematic research infrastructure

Kongsfjorden
system



Atmosphere



Glaciology

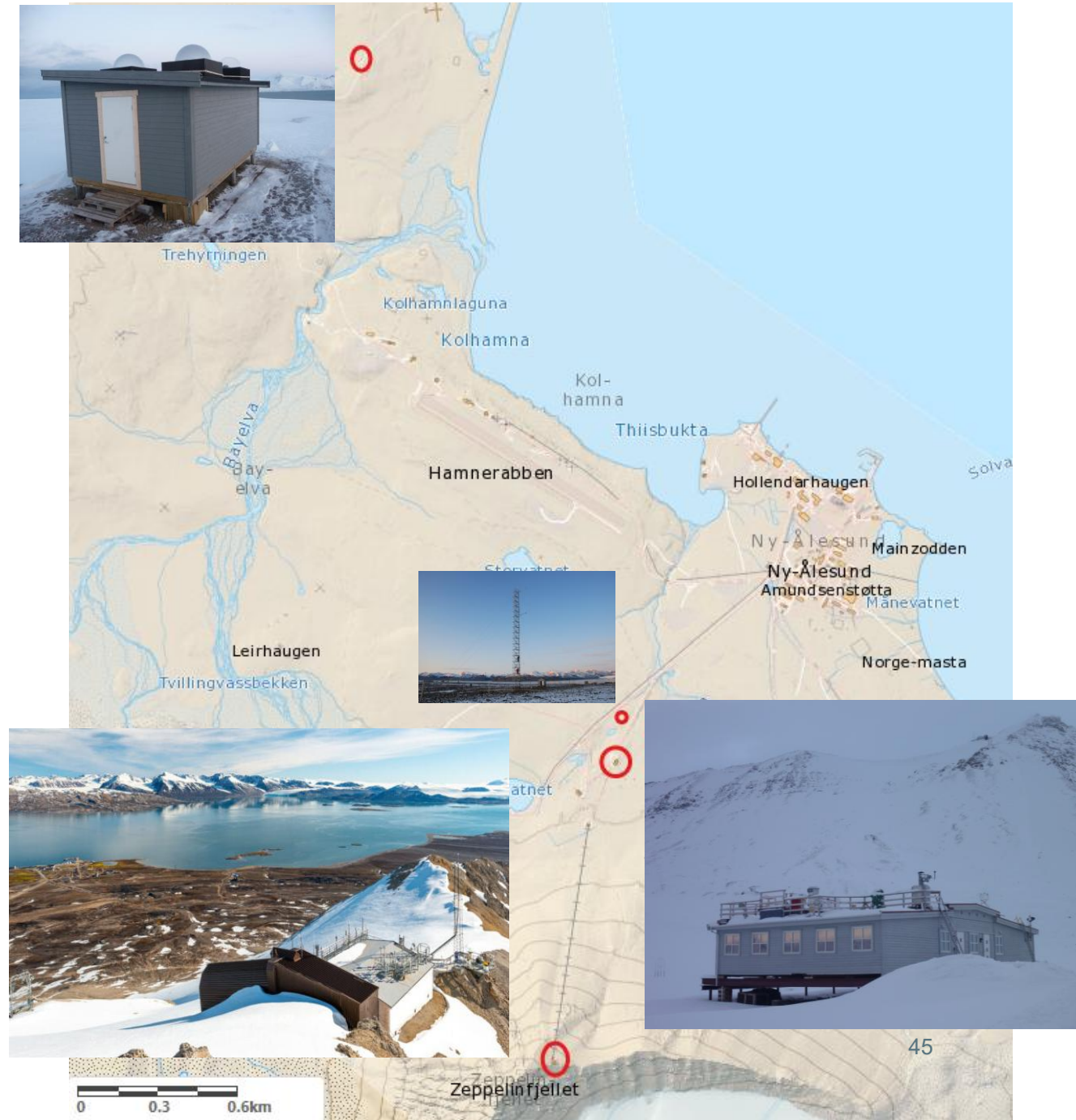


Terrestrial
ecosystems



Atmospheric research

- Gruvebadet (KB)
- Light sensitive cabin (KB)
- Zeppelin (NPI)
- Climate Change Tower (CCT) (CNR)
- Not booked through RiS → see attachment for detailed instructions on booking process



Kongsfjorden system

- Marine Laboratory (KB)
- Research vessel R/V Teisten with captain (KB)
- Polar Circle with captain (NPI)



Marine Laboratory

- Booked through RiS. Generally closed in November due to general maintenance and renovation.
- Contact Kings Bay if you are planning activities in the marine lab.



- Sea water system
- Temperature controlled rooms (range: 0-15°C)
- Dry- and Wet labs with fume hood
- Non-chemical laboratory
- C-class laboratory for working with radioactive isotopes
- Outdoor platform with possibility for system sea water
- Dive locker and decompression chamber

Access to the Fjord

R/V Teisten:

- Small scale scientific operations and surveys in Kongsfjorden and Krossfjorden
- Winter operation (15th October – 31st of March)
 - Contact Kings Bay
- Weather dependent. Plan for extra days in Ny-Ålesund in case of delays
 - Not available Easter 2026 (week 14)

Polarcirkel boat:

- Transport in Kongsfjorden area
- Operation period: May-October
- Special permissions and insurances needed for some areas



Terrestrial Ecosystem and Glaciology

The Terrestrial Laboratory (Veksthuset) (KB)

Booked through RiS

1 Dry laboratory with fume hood

- Microscopes
- Muffle furnace

1 Semi-wet laboratory

- Laminar flow hood (LAF)
- MilliQ water
- **No chemicals**

Campaign year 2026!

Free use for terrestrial and
glaciological researchers



Logistics services and other support from KB

- **Operational/Technical Support**
(e.g., moving heavy equipment, assistance from electrician, carpenter, plumber, or other operational staff),
- submit a request to Kings Bay: operations@kingsbay.no
- Operational staff will assist as time allows, alongside their regular duties. Extra charges apply.



Logistics services and other support from KB (Contd.)


- Chemical and gas orders, are booked through the Research in Svalbard (**RiS**) portal
- **Book Early!** Services are first-come, first-serve basis, and shipping of equipment, chemicals, and gases takes time!



Cargo and Freight

- Transport from LYR to NyA: Limited air cargo capacity (20 kg) and restrictions on what can be brought in the plane
- Research-related cargo should be sent by **cargo ship**
 - Ship early. Cargo ship about every 6 weeks
- Plan how to ship your equipment and samples back after your stay





Part V

Preparations, Permissions, etc.

(What you need to do before arrival)

Permissions for field activity in Ny-Ålesund

- As a rule, most field activities will require permission from The Governor of Svalbard
- Applications must be submitted through RiS
- Deadlines are:
 - 15 January for fieldwork in March, April, and May.
 - 1 March for fieldwork in June, July, and August.
 - 1 July for fieldwork in September, October, and November.
 - 1 October for fieldwork December, January, and February.
- The Governor has guidelines – available on their webpage
<https://www.sysselmesteren.no/contentassets/61617fb2660044048f9b76e56874c688/guidelines-for-researchers-in-svalbard-2025.pdf>
- Several new environmental regulations entered into force the 1st of January 2026.



Photo: Ingrid Kjerstad/NPI

Instruments and installations in the field

All instrument and installations need...

- ...a permission from the Governor
- ... approval from Kings Bay if within the land-use plan of Ny-Ålesund land-use-plan area. Write to adviser@kingsbay.no
 - Provide correct information about environmental intervention/size/location/coordinates
- ...to be marked when set up in the field
- ...to be registered in the Ny-Ålesund GIS-system. Write to research.nya@npolar.no when installing an instrument in the field.
- ... to have a plan for removal.



Photo: Ingrid Kjerstad/N

Permission to borrow/carry firearms on Svalbard

- You need polar bear protection on Svalbard – in Ny-Ålesund this is a rifle and a flare gun.
- You need a permit from the police to borrow and carry firearms in Norway
 - International researchers can apply through the Governor: <https://www.sysselmesteren.no/en/weapon/>
 - Residents of Norway must apply through their local police administration office.
 - Required documentation: criminal records and proof of gun/rifle handling/training: UNIS, Kings Bay, AWI training.
- The various host institutions in Ny-Ålesund have different guidelines.



Radio frequency restrictions in Ny-Ålesund

- By law **you cannot utilize frequencies** within this range: 2-32 GHz
- This includes the use of **Wi-Fi** and **Bluetooth**
- The regulations are in place to protect measurements carried out by the Norwegian Mapping Authority



Radio frequency restrictions in Ny-Ålesund

- This means: No Bluetooth, No Wi-Fi, No microwave ovens.
- Besides phones and laptops, check your earbuds, watches, cameras, tooth brushes, ..., ..., ..., ...,
- You can use your 4G on your phone, but NO hotspot, NO Wi-Fi, NO Bluetooth.
- 900m around NMA observatory: phone must be in flight mode.
- See details on <https://nyalesundresearch.no>



Permissions to use drones in Ny-Ålesund

- The Norwegian Civil Aviation Authority administers the provisions on drones. Familiarize yourself with and follow the rules for drone flying.
- Coordinate flying with the Kings Bay airport personnel within 5 km of the airport
- Due to frequency limitations drones can come into conflict with each other – **please check our calendar** to schedule and coordinate with other projects.
- <https://nyalesundresearch.no/research-and-monitoring/researchers-guide/using-air-space/>



Other permissions from Norwegian authorities

- The responsibility lies with the researcher to familiarize themselves with the applicable legislation.
- See overview of other agencies from The Svalbard Science Forum, consult with the Governor

Experience from Ny-Å RS:

- You might need permission from The Norwegian Food Safety Authority (animal experiments, handling, sampling etc.)
- The Norwegian Coastal Administration (set up of instruments in the fjord)
- +++++



A photograph of a snowy street in Ny-Ålesund, Norway, during the winter. The street is covered in a thick layer of snow, with tracks visible in the center. On the left, there are several houses, including a prominent red one with a snow-covered roof. On the right, a long, dark-colored train car is parked on tracks. The background shows more buildings and distant mountains under a cloudy sky.

Part VI

What to Expect when in Ny-Ålesund

Arrival in Ny-Ålesund

- Information in the reception upon arrival
- Detailed in-brief by your host including practical information regarding daily life and activity in Ny-Ålesund, such as mealtimes, gym etc.
- <https://nyalesundresearch.no>



When in Ny-Ålesund

- Note that there will be limited support available during weekends and holidays
- KB staff operate Monday-Friday 08:00-16:00
- Kings Bay staff on weekend duty – reduced support or more expensive
- *Plan ahead for any assistance or services you might need*

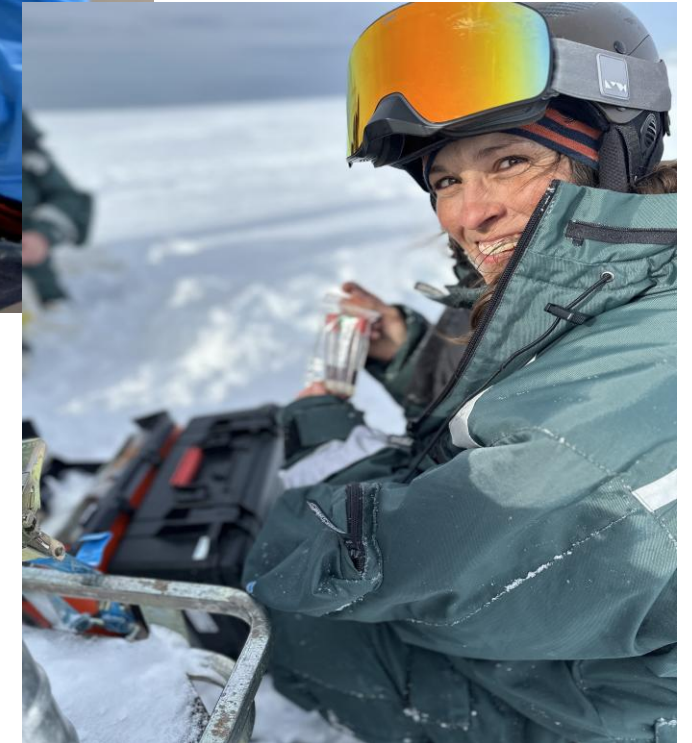
Public holidays Norway 2026

- Easter: Week 14 (29.03 & 02.04 - 06.04)
- 01.05 – Labour Day
- 14.05 – Ascension Day
- 17.05 – Norwegian Constitution Day
- 24.05 – Pentecost
- 25.05 – Pentecost
- Christmas: week 52 (24.12 - 26.12)



Contribute with a science talk when in Ny-Ålesund

- Share your project and your plans!
- Organized every week after dinner
- Participate in discussions
- Good opportunity to get to know other projects in Ny-Ålesund!



Part VI Safety



Safety in Ny-Ålesund

24/7 Watchman on Duty

- First point of contact for emergencies or urgent assistance outside regular working hours.

Medical Assistance:

- **Nurse** on-site. Handles non-critical medical needs.
- Limited selection of mostly non-prescription medication.



Field Safety

- The Governor is responsible for planning, leading and coordinating the rescue service for Svalbard
- If you have an emergency in field the Governor is the point of contact.
- **All field teams are responsible for their own safety in the field if not otherwise is planned with your hosting institution.**



Field Safety

- A documented risk assessment is mandatory for all participants going out in the field.
- Be aware of insurance requirements in some areas for your fieldwork.
- **All field teams are responsible for their own safety in the field if not otherwise is planned with your hosting institution.**



Photo: Svalbard Folkehøyskole

A photograph of a small cluster of purple flowers growing on a mossy rock, with the word "Questions?" overlaid in white text.

Questions?



Thank you for your participation!

This presentation with relevant links will be sent out to participants after this meeting.

Stay in touch with Ny-Ålesund Research Station in the following ways:

- LinkedIn: <https://www.linkedin.com/company/ny-alesund-research-station/>
- Sign up for our newsletters: <https://nyalesundresearch.no/newsletter/>
- <https://nyalesundresearch.no>

